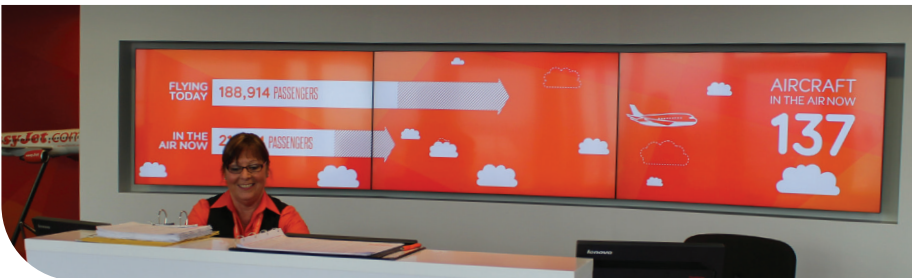




QUADVISION
LEADING EDGE AV SPECIALISTS

DATA SHEET

Delivering the WOW Factor with a Video Wall



Quad Vision Ltd is a specialist AV solution provider, creating and delivering visual display solutions for a multitude of applications. Companies come to us when looking for that extra WOW factor, something that will impress their visitors or customers, something that **sets them apart** from their competitors, something that leaves an excellent **lasting impression** on visitors.

Often it's a reception area or lobby that is chosen as the right space for a video wall, which can be LCD or LED. Increasingly there is a need for the video wall to be **fully interactive** so here we incorporate a fully functioning touch screen overlay to the system which offers users perhaps internet access, local information, company information, really the list of possibilities is endless.

Content is managed either onsite or remotely using our **Video Wall Controllers**, however, if you don't have the technical manpower, Quad Vision offers a fully outsourced **remote content management service**.

A video wall is a resilient solution and with our tailored preventative maintenance plan in place, the system will run at optimal performance with little or no downtime.

Our Customers

easyJet

**ROYAL
DOCKS**

VGS
WWW.VGS.GLOBAL



**Proton
Partners
International**
Proton Beam Therapy

**Imagine
Homes**

PRO-ALIGN

Call +44 (0)3300 419019

enquiries@quadvision.co.uk

www.quadvision.co.uk





LCD Video Screens

Ultra thin bezel, high resolution screens with 4K+ capability, or more specialist high brightness screens which counteract ambient and sunlight interference, maintain clear and detailed imagery for the viewer.

There are multiple possibilities to consider in fitting your available space and design purpose, **Quad Vision** are experts in providing bespoke solutions including custom mounts and frames.

Our Video Screen Suppliers

SAMSUNG

LG
NEC

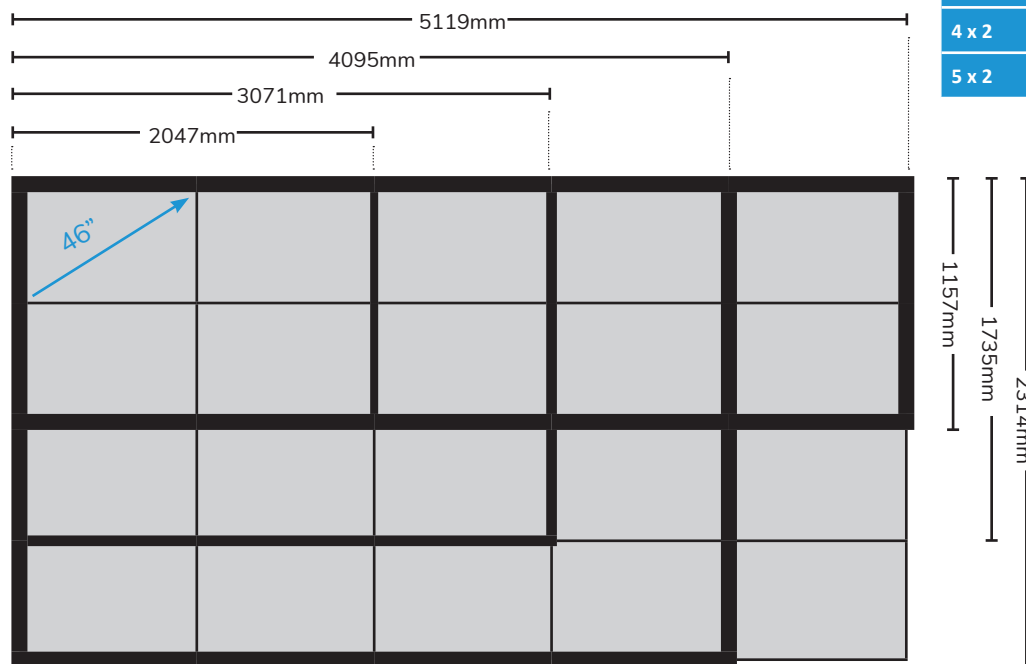

Technical Data (data based on Samsung range, other manufacturer details on request)

Diagonal Size	46"	55"
Set Dimension mm	1023.8 x 578.4 x 47.9	1213.5 x 684.3 x 96.6
Active Display Size mm (V x H)	1018.08 x 572.67	1209.6 x 680.4
Screen Weight	13.5kg	21.5kg
Pixel Pitch	0.53025 (H) x 0.53025(V)	0.63mm(H) x 0.63mm(V)
Typical Brightness:	450 nit	500 nit
Bezel Width	3.4mm(U/L), 2.0mm(R/B)	2.3mm(U/L), 1.2mm(R/B)
Resolution	1920 x 1080 (16:9), 4K+ Ultra High Definition	
Recommended Usage Hours	24/7	
Operating Temperature	0~40°C	
Mount / Frame	Custom to suit application	
Typical Screen Format	2 x 2, 3 x 3, 4 x 4, 2 x 4, 2 x 5	
Certification	CE	
Power	AC 100 - 240 V~ (+/- 10 %), 50/60 Hz	
Power Consumption	<ul style="list-style-type: none"> • Max[W/h]132 • Typical[W/h]98 • BTU(Max)450 • Sleep mode less than 0.5W • Off mode less than 0.5W 	<ul style="list-style-type: none"> • Max[W/h]198 • Typical[W/h]136 • BTU(Max)675 • Sleep mode less than 0.5W • Off mode less than 0.5W



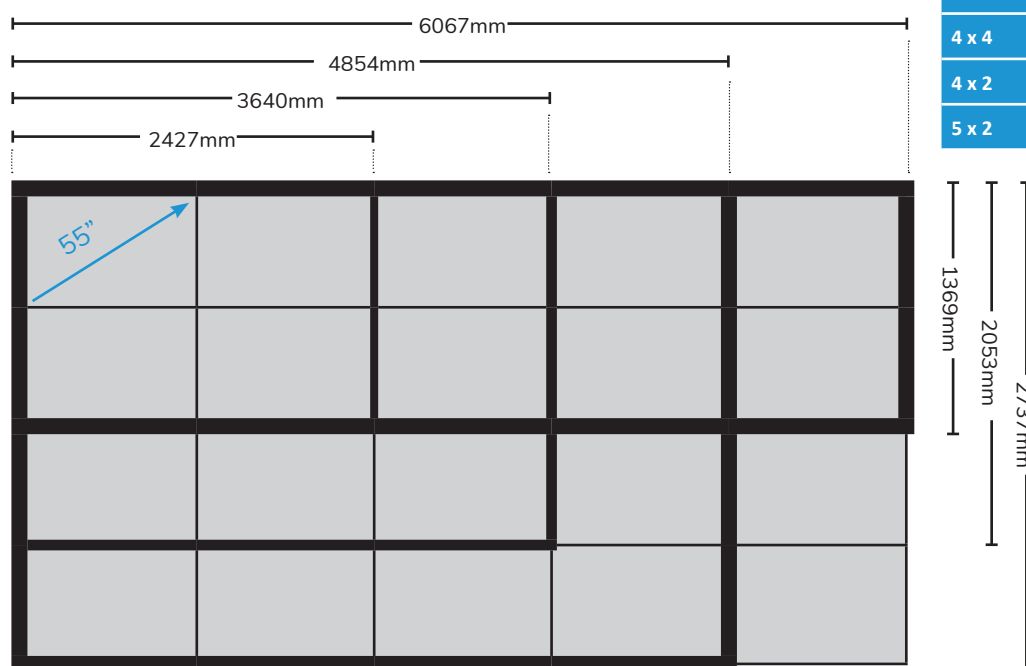
Typical Screen Formats

46" Screens



Format	46" Screens	Resolution
2 x 2	2047 x 1157mm	3840 x 2160px
3 x 3	3071 x 1735mm	5760 x 3240px
4 x 4	4095 x 2314mm	7680 x 4320px
4 x 2	4095 x 1157mm	7680 x 2160px
5 x 2	5119 x 1157mm	9600 x 2160px

55" Screens



Format	55" Screens	Resolution
2 x 2	2427 x 1369mm	3840 x 2160px
3 x 3	3640 x 2053mm	5760 x 3240px
4 x 4	4854 x 2737mm	7680 x 4320px
4 x 2	4854 x 1369mm	7680 x 2160px
5 x 2	6067 x 1369mm	9600 x 2160px



Video Wall Controllers

We use a content control system with powerful processing capability and the ability to manage signals from a wide range of devices, for multiple displays through a single platform. Controllers support real time or pre-programmed content to an ultra high resolution of 4K+. Quad Vision offers a range of video wall controllers to support a multitude of video wall layouts and complexities, with highly expandable and flexible solutions.



Key Features

- Output capable of running 4K video at 60fps
- 4U rack or optional midi tower enclosure
- Flexible Windows based controller, allowing Windows based applications
- Robust video wall controllers to military grade specification
- Up to 64 Outputs
- Up to 64 Captures
- Capture resolution of up to 4K
- Ability to integrate with Quad Vision User Interface for easy use
- Streaming capture for CCTV etc
- Network PC screen capture and display

Power Supply	Single phase or RPSU
Power Requirement	AC 110V to 240V, 50/60Hz
Operating Temperature	0~40°C
Operating Humidity	10%-90% non-condensing
Recommended Usage Hours	24/7
Capture	HDMI/DVI/SDI/VGA capture options
Certification	CE

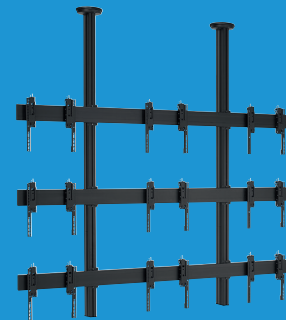
Custom Frames & Mounts

We have a range of systems to suit a variety of installations including:

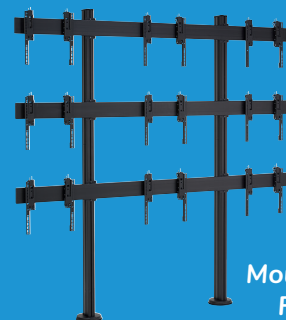
QV Frames: Utilising our flexible modular mounting systems we can design and install a system to suit either your unique configuration or the installation location.

Pop Out Frames: Make installation and service to video walls very easy. Press on the display and a spring loaded mechanism will release the display and push it forward.

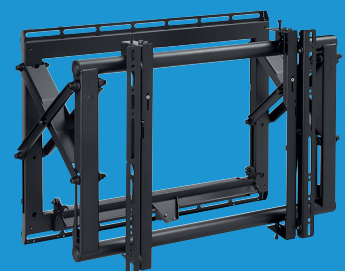
Vogels: A range of off the shelf wall, floor and ceiling mounted solution.



Ceiling Mounted Frame



Floor Mounted Frame



Pop Out Frame