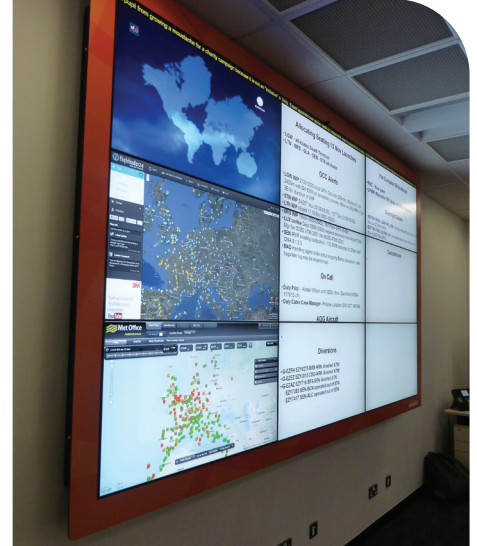




**QUADVISION**  
LEADING EDGE AV SPECIALISTS

## DATA SHEET

# Commercial LCD Video Wall



**Quad Vision Ltd** is a specialist AV solution provider, creating and delivering visual display solutions for a multitude of applications including operation rooms, control and command centres. Managing complex AV solutions requires system integration and programming knowledge that is only possible through extensive and qualified experience in the field. Enabling proprietary products to work together seamlessly through our Quad Vision User Interface Software (QVUI), is our unique technical specialism.

In a situation when multiple feeds of mission critical information are pulled together for team viewing, a video wall makes that process very straightforward. Comprising largely of 3 main components; **Video Screens** a **Video Wall Controller** & **Software** the complete system is proven to substantially enhance communication, team work and efficiency. A video wall is a must for any control room, command or operation centre with 24/7 operation.

### Our Customers



An LCD video wall is a resilient solution and with our tailored preventative maintenance plan in place the system will run at optimal performance with little to no downtime.

## LCD Video Screens

Ultra thin bezel, high resolution screens with 4K+ capability, or more specialist high brightness screens which counteract ambient and sunlight interference, maintain clear and detailed imagery for the viewer.

There are multiple possibilities to consider in fitting your available space and design purpose, **Quad Vision** are experts in providing bespoke solutions including custom mounts and frames.

Our Video Screen Suppliers

**SAMSUNG**  **LG** **NEC**



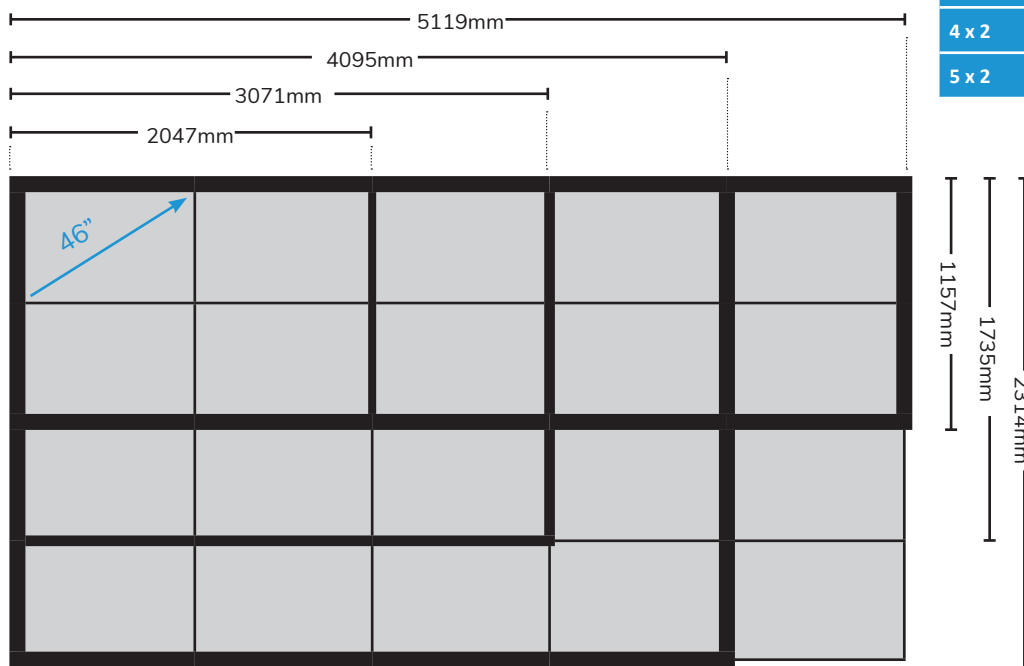
Technical Data (data based on Samsung range, other manufacturer details on request)

Diagonal Size	46"	55"
Set Dimension mm	1023.8 x 578.4 x 47.9	1213.5 x 684.3 x 96.6
Active Display Size mm (V x H)	1018.08 x 572.67	1209.6 x 680.4
Screen Weight	13.5kg	21.5kg
Pixel Pitch	0.53025 (H) x 0.53025(V)	0.63mm(H) x 0.63mm(V)
Typical Brightness:	450 nit	500 nit
Bezel Width	3.4mm(U/L), 2.0mm(R/B)	2.3mm(U/L), 1.2mm(R/B)
Resolution	1920 x 1080 (16:9), 4K+ Ultra High Definition	
Recommended Usage Hours	24/7	
Operating Temperature	0~40°C	
Mount / Frame	Custom to suit application	
Typical Screen Format	2 x 2, 3 x 3, 4 x 4, 2 x 4, 2 x 5	
Certification	CE	
Power	AC 100 - 240 V~ (+/- 10 %), 50/60 Hz	
Power Consumption	<ul style="list-style-type: none"> <li>• Max[W/h]132</li> <li>• Typical[W/h]98</li> <li>• BTU(Max)450</li> <li>• Sleep mode less than 0.5W</li> <li>• Off mode less than 0.5W</li> </ul>	<ul style="list-style-type: none"> <li>• Max[W/h]198</li> <li>• Typical[W/h]136</li> <li>• BTU(Max)675</li> <li>• Sleep mode less than 0.5W</li> <li>• Off mode less than 0.5W</li> </ul>



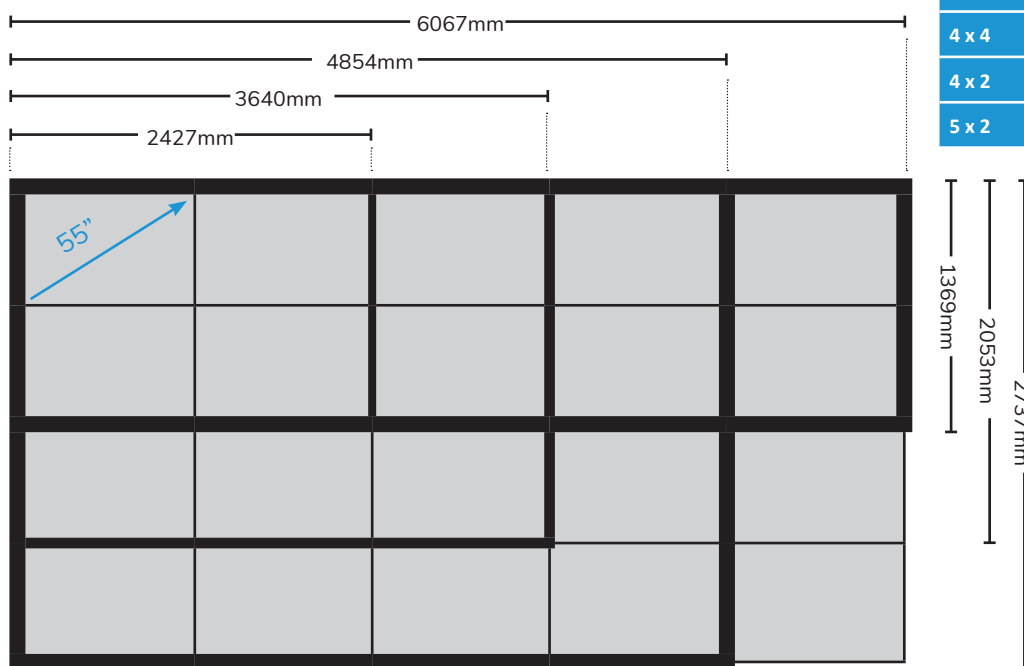
## Typical Screen Formats

### 46" Screens



Format	46" Screens	Resolution
2 x 2	2047 x 1157mm	3840 x 2160px
3 x 3	3071 x 1735mm	5760 x 3240px
4 x 4	4095 x 2314mm	7680 x 4320px
4 x 2	4095 x 1157mm	7680 x 2160px
5 x 2	5119 x 1157mm	9600 x 2160px

### 55" Screens



Format	55" Screens	Resolution
2 x 2	2427 x 1369mm	3840 x 2160px
3 x 3	3640 x 2053mm	5760 x 3240px
4 x 4	4854 x 2737mm	7680 x 4320px
4 x 2	4854 x 1369mm	7680 x 2160px
5 x 2	6067 x 1369mm	9600 x 2160px



## Video Wall Controllers

We use a content control system with powerful processing capability and the ability to manage signals from a wide range of devices, for multiple displays through a single platform. Controllers support real time or pre-programmed content to an ultra high resolution of 4K+. Quad Vision offers a range of video wall controllers to support a multitude of video wall layouts and complexities, with highly expandable and flexible solutions.



### Key Features

- Output capable of running 4K video at 60fps
- 4U rackor optional midi tower enclosure
- Flexible Windows based controller, allowing Windows based applications
- Robust video wall controllers to military grade specification
- Up to 64 Outputs
- Up to 64 Captures
- Capture resolution of up to 4K
- Ability to integrate with Quad Vision User Interface for easy use
- Streaming capture for CCTV etc
- Network PC screen capture and display

Power Supply	Single phase or RPSU
Power Requirement	AC 110V to 240V, 50/60Hz
Operating Temperature	0~40°C
Operating Humidity	10%-90% non-condensing
Recommended Usage Hours	24/7
Capture	HDMI/DVI/SDI/VGA capture options
Certification	CE

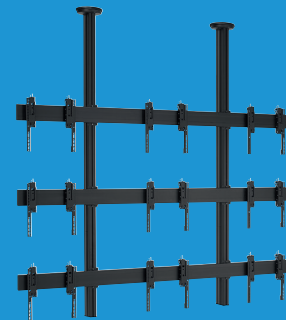
## Custom Frames & Mounts

We have a range of systems to suit a variety of installations including:

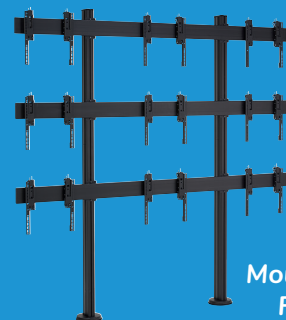
**QV Frames:** Utilising our flexible modular mounting systems we can design and install a system to suit either your unique configuration or the installation location.

**Pop Out Frames:** Make installation and service to video walls very easy. Press on the display and a spring loaded mechanism will release the display and push it forward.

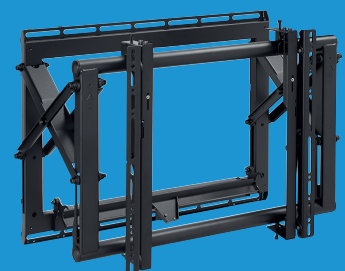
**Vogels:** A range of off the shelf wall, floor and ceiling mounted solution.



Ceiling Mounted Frame

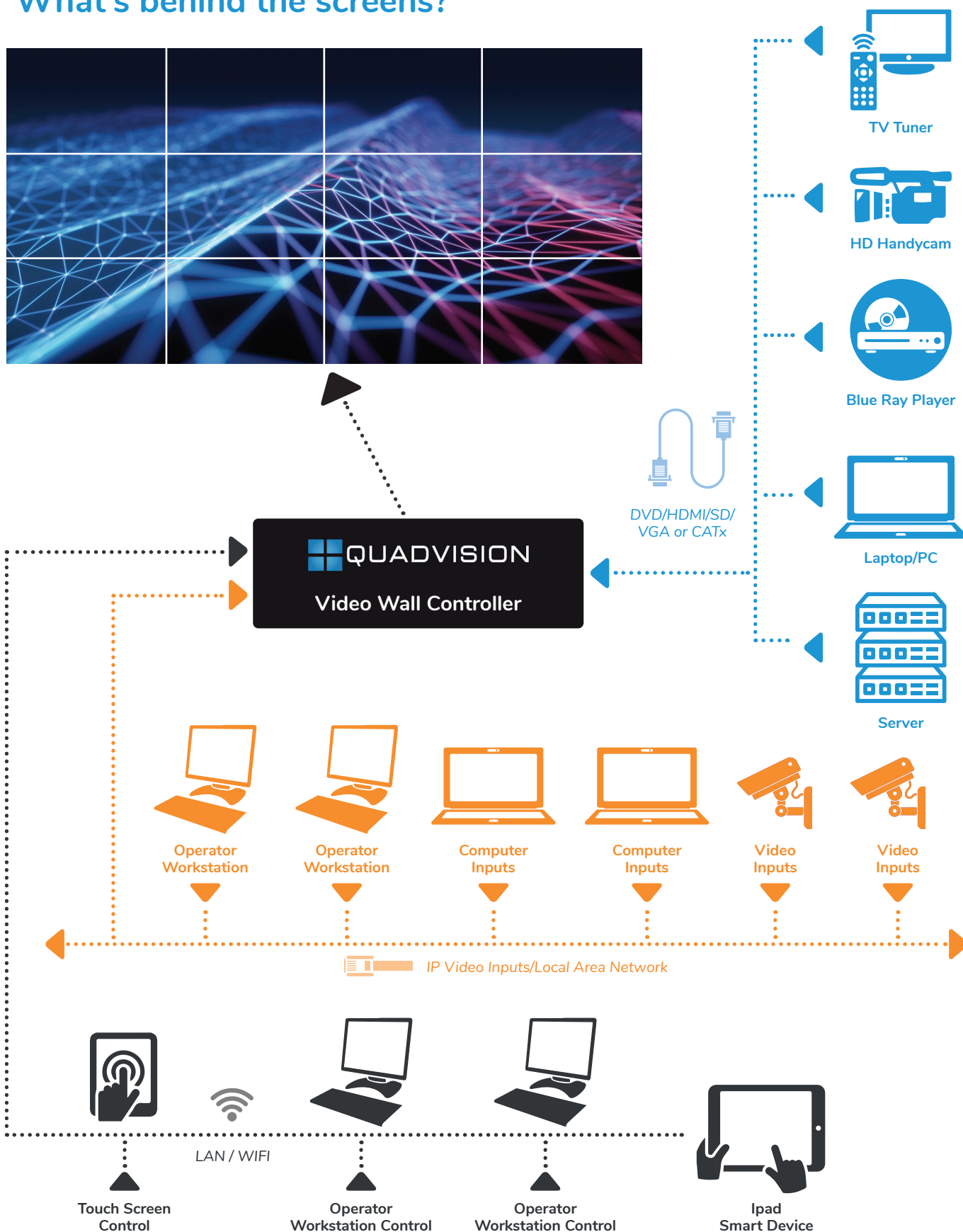


Floor Mounted Frame



Pop Out Frame

## ‘What’s behind the screens?’



## Software

The **Quad Vision User Interface Software (QVUI)** is our unique software solution that is created individually for each customer depending on their requirements and brings together multiple programs, applications and network systems into one easy to use operator platform.

QVUI software is user friendly, intuitive and easy to master, providing creative solutions for operational networks.

Through the use of our unique **Quad Vision User Interface Software (QVUI)**, flexible and straightforward management of content placement on the display is achieved, from multiple sources. This advanced behind the scenes technology enables seamless transition between shift workers, with individual pre programmed configuration and password protected user access, with individual defined rights.

### Technical Features:

- Fully branded option including your company colours and logo
- Administrator control provides access level rights for different individuals
- An unlimited number of screen templates can be created
- Remote display control option, within the environment
- Multiple control screen options:
  - ☐ Local control screen
  - ☐ Touch screen
  - ☐ Network control screen
  - ☐ Smart devices i.e. iPad
- Multiple local applications:
  - ☐ Google Earth
  - ☐ Custom user designed application
  - ☐ Web browser
  - ☐ Video application e.g. VLC
- Ability to provide TV channels and TV channel control
- Customisable functionality add ins:
  - ☐ White board for messaging
  - ☐ Lane control for picking
  - ☐ Video Matrix
  - ☐ On/off screen control for multiple screens

